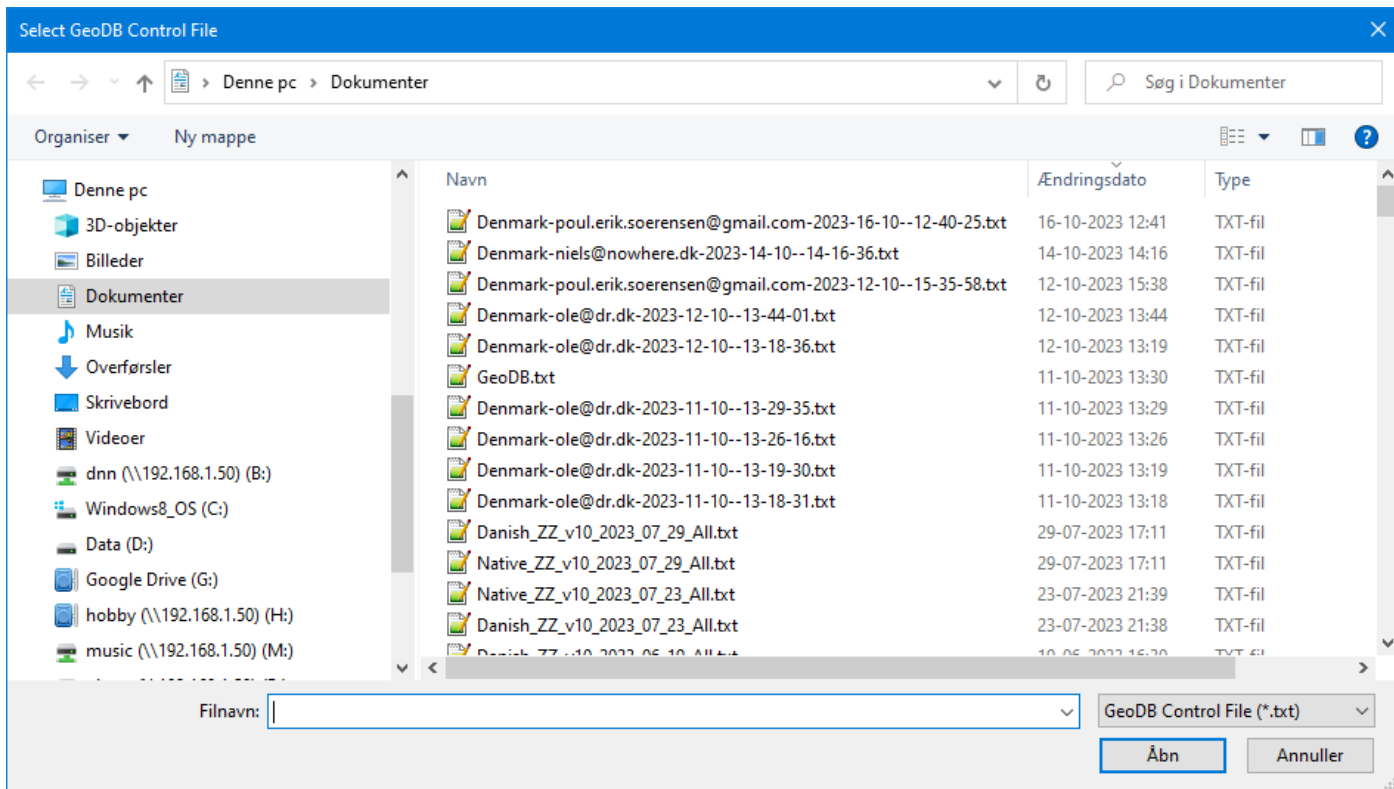


## GeoDB Display and Edit.

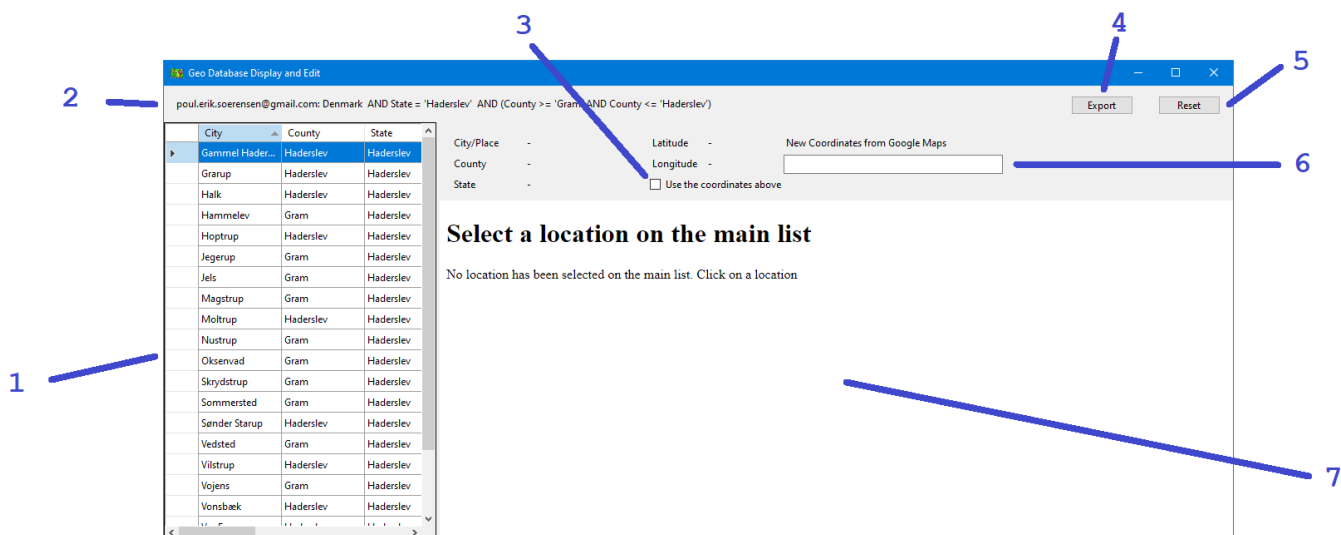
Use this tool to correct incorrect coordinates for locations in the Geo database that are not correct for one reason or another. The tool cannot change the name of the site, or place it in a different state hierarchy. The tool requires a control file that determines the workspace assigned to you by a central administrator.

The first time you start the tool, it asks you for this control file.



Select the control file and click on Open (Åbn is Danish for open)

When you have selected the control file, the GeoDB Display and Edit window is displayed:



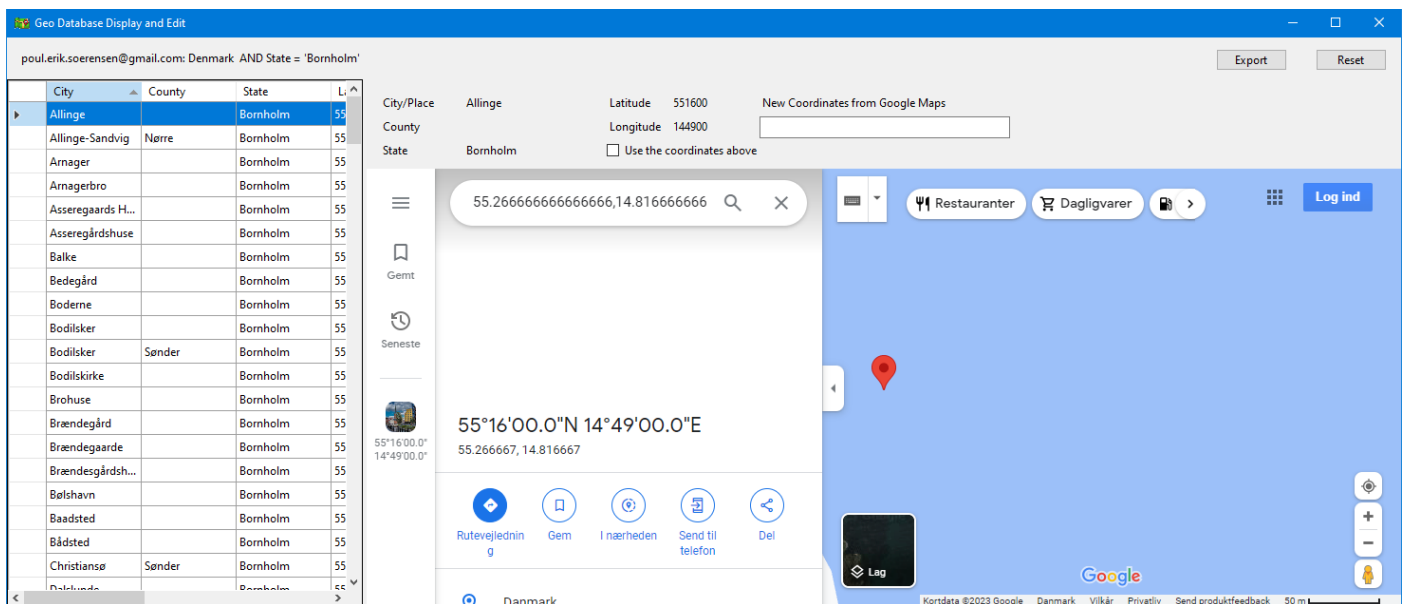
The areas of interest on this window are:

1	This list holds all the locations found in the Geo-database, that are within the range specified by the control file. You can sort the list by clicking on any of the headers.
2	This is a short display of the contents of the control file.
3	If you are the coordinates are correctly mapped, set a checkmark in this box.

4	Export button. When you have completed the remapping of the coordinates, you click the Export button, to create a file, which will contain all your confirmed locations. You confirm by putting a checkmark in the box (3)
5	Reset button. <b>Caution! By clicking the Reset button, you remove the association with the control file and delete all your updates. You should only do this when you are done with your area, have exported your updates and received a new control file.</b>
6	New Coordinates from Google Maps. This field is used to update the coordinates of the location with new coordinates from Google Maps. More on how the field is used later in this document.
7	This is an embedded web browser. When a place has been selected in the list on the left, the browser will navigate to the place in Google Maps

How to use the tool.

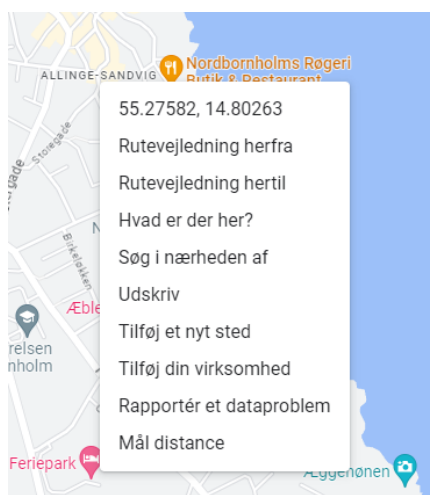
In the following example, I have selected one of the locations in the Geo database that does not have the correct coordinates.



In this case, Google Maps shows that the place is in the open sea.

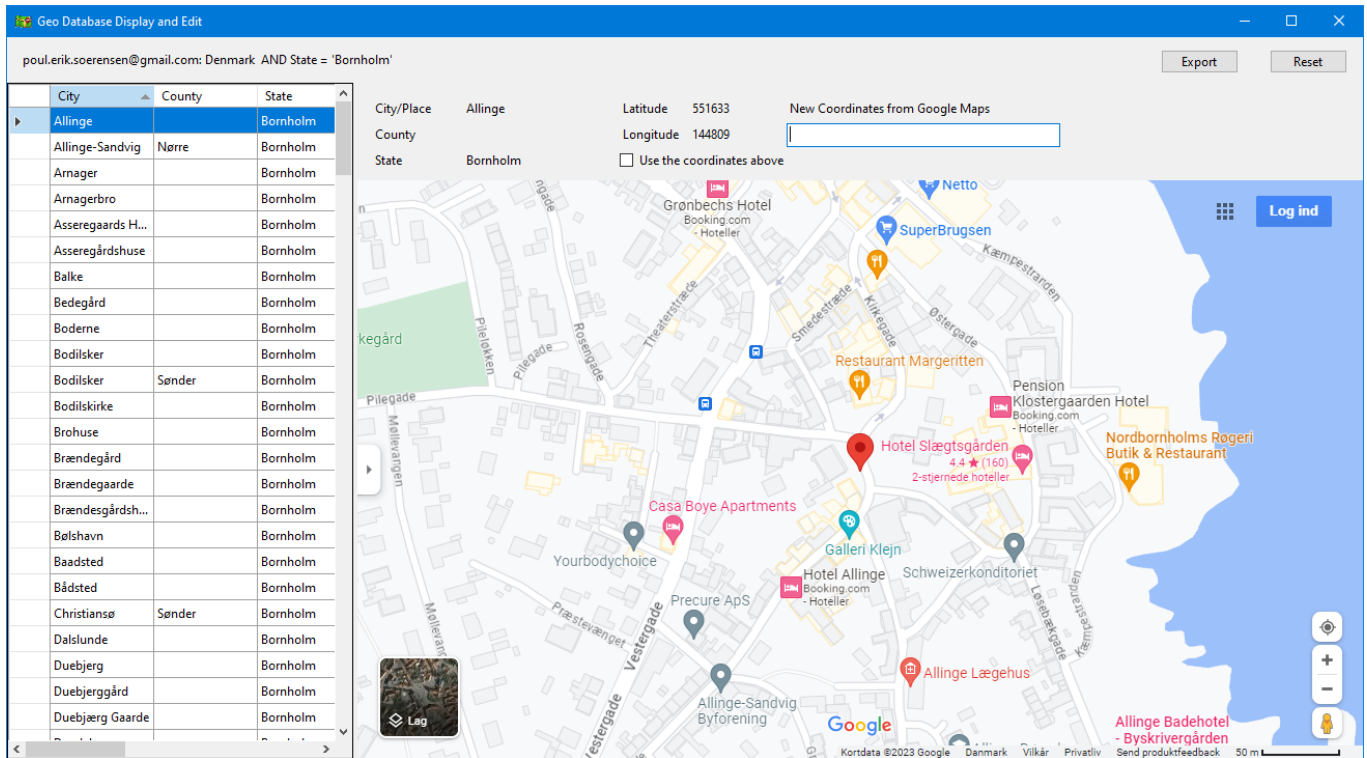
(Note. There is a side panel on the left of the web browser. Unfortunately, I cannot hide this panel automatically, but you can click on the small arrow and thereby minimize it. Unfortunately, it comes back every time you navigate to a place in Google Maps )

I find the right location on the map and make a click with the right mouse button. Google Maps shows here after a menu



The top element shows the coordinates of the selected location. By clicking on them, they are copied to the Windows clipboard. Now you insert these coordinates into the field "New Coordinates from Google Maps", by right-clicking on the field and choosing paste, or by clicking on the field and pressing Ctrl+V.

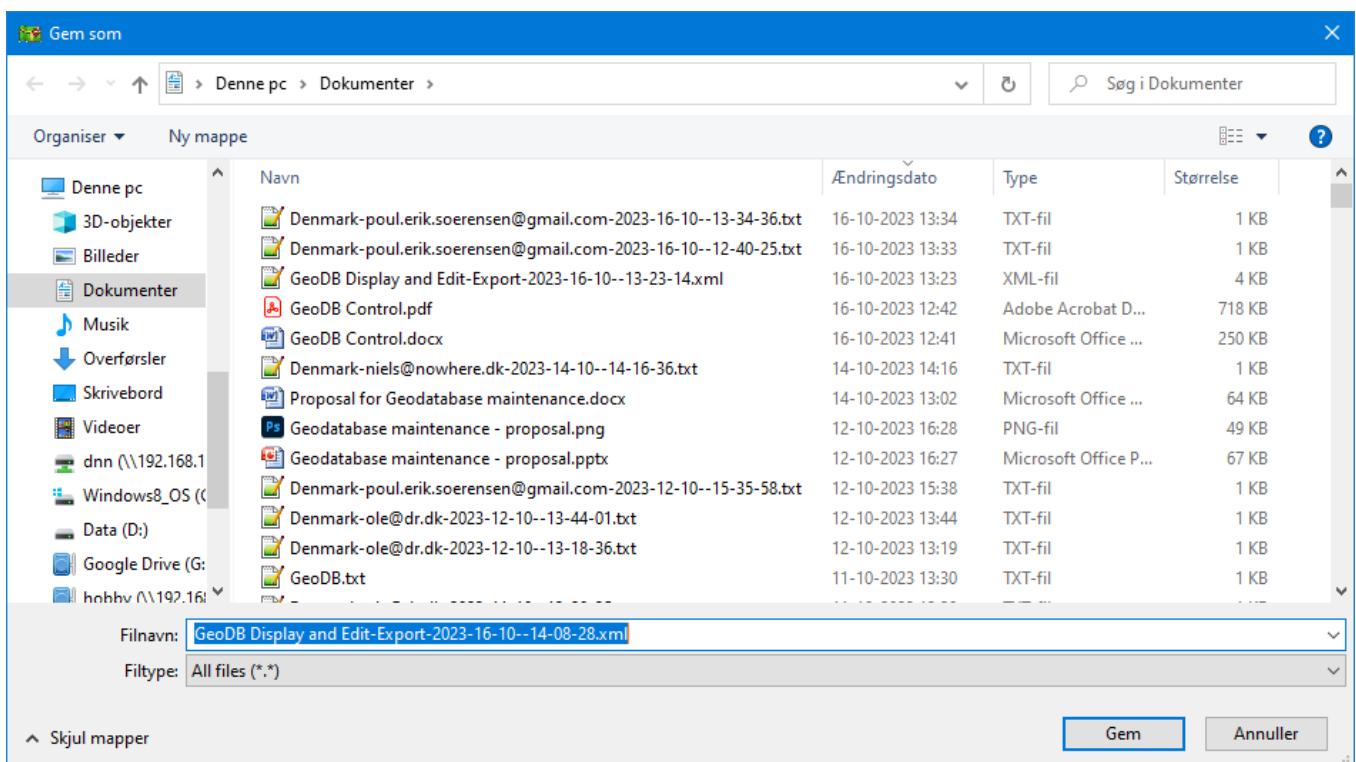
The program will now use update Google Maps and display the selected location.



If you are satisfied, put a checkmark in the checkbox "Use the coordinates above"

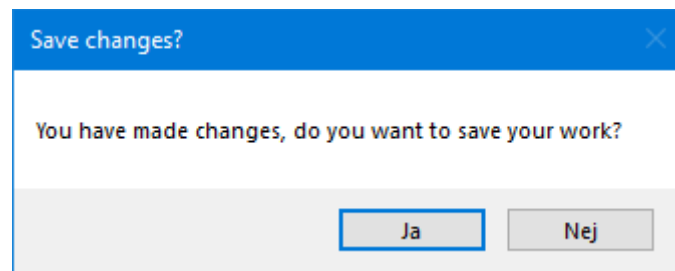
When you put a checkmark, the field "New Coordinates from Google Maps" is switched off at the same time, so that you don't accidentally destroy a correct placement.

When you have finished with the assigned area, you create an export file with your changes by clicking the Export button.



This file contains all your confirmed coordinates (both new and old). You send the file to the person responsible for updating the Geo database.

When you close the program and you have made any changes, you will be prompted to save these:



The program will save them and use them next time you start the program.

**The Wait window.** It takes some time to initialize the embedded web browser. Until the web browser is ready, a Wait window is displayed. This window closes automatically when the browser is ready.

